

Pilipinas Shell  
Foundation»»



# PAGLALAYAG

Navigating Progress, Honoring the Journey

ANNUAL REPORT 2024







## TABLE OF CONTENTS

- 2 About Pilipinas Shell Foundation, Inc.
- 3 Our Focus: PSFI 2021-2025 Strategic Plan
- 3 Our Program Spending and Donations
- 4 Message from Our Chairman
- 4 Message from Our President
- 5 Message from Our Executive Director
- 10 Nutrition and Food Security
- 13 Health and Safety
- 15 Education
- 17 Energy
- 18 Livelihood
- 20 Environment
- 22 Disaster Response
- 23 Community Relations
- 24 Awards and Recognitions
- 24 Trustees and Officers
- 25 Our Partners
- 27 Independent Auditor's Report

## ABOUT PILIPINAS SHELL FOUNDATION, INC.

Pilipinas Shell Foundation, Inc. (PSFI) was established on 19 August 1982 as the social arm of Shell companies in the Philippines. Over the years, it has evolved to meet community needs through strategic programs in nutrition, livelihood, education, health, environment, and energy. More than 16 million lives have been empowered nationwide, with even more progress expected as the Foundation continues to move forward.

PSFI has grown into a more dynamic organization, expanding its impact beyond Shell's worksites and host communities while staying true to its core values of honesty, integrity, and respect for people. As of 2024, PSFI programs operate in Metro Manila, Batangas, Bohol, Cagayan de Oro, Camarines Sur, Iloilo, La Union, Leyte, Negros Occidental, Oriental Mindoro, and Palawan.

PSFI continues to extend its reach to underserved areas by collaborating with more partners and stakeholders to drive sustainable development. Its initiatives align with the United Nations Sustainable Development Goals (SDGs), contributing to key goals such as SDG 2 (Zero Hunger), SDG 3 (Good Health and Well-Being), SDG 4 (Quality Education), SDG 7 (Affordable and Clean Energy), SDG 8 (Decent Work and Economic Growth), and SDG 13 (Climate Action).

### MISSION

Guided by its vision, PSFI implements programs designed to build capacities to promote self-reliance and develop the potential of its beneficiaries, both individuals and communities.

### VISION

An organization sustaining its initiatives in enabling the disadvantaged to become productive and responsible members of Philippine society and in helping strengthen community systems, thus contributing to the country's sustainable development, at all times upholding the Shell core values of honesty, integrity, and respect for people.

## OUR FOCUS: PSFI 2021-2025 STRATEGIC PLAN

PSFI's 2021-2025 Strategic Plan remains the Foundation's roadmap for driving sustainable development and empowering communities. In 2024, PSFI demonstrated steady progress across its six thematic areas, delivering programs that respond to both long-term goals and immediate community needs. With each challenge overcome, the Foundation grew more resilient, transforming obstacles into opportunities for impact. Guided by its mission and strengthened by collaboration, PSFI continues to move with purpose toward its 2025 vision.

### THEMATIC AREA



**Nutrition and Food Security**  
Establish self-reliant, food-secured, well-nourished, and resilient communities



### 2025 TARGET INDICATOR

- Reduce the prevalence of wasting among children under five years old to 5% or below
- Reduce the prevalence of stunting among children under five years old to 34.69% or below
- Reduce the underweight rate among children under five years old to 17.9% or below
- 4,200 households with access to and ability to obtain nutritious food
- 2,500 trained farmers applying sustainable farming technologies
- 5% increase in average farm income and household monthly income



**Health & Safety**  
Prevent premature mortality due to epidemics and road accidents



- Maintain zero accident-related injuries and mortality in catchment sites
- Zero local malaria transmission by 2026\*
- Contribute to the 95-95-95 Target to end the HIV epidemic



**Education**  
Advancing STEM Education for Filipino youth



- 500 scholars supported
- 100% of scholars are employed or engaged in a business
- 2,022 students trained in STEM problem-solving skills



**Energy**  
Powering a brighter future, one village at a time



- 150 megawatt-hours of energy produced annually from a renewable source
- 12 communities have access to clean and affordable energy through the microgrid



**Livelihood**  
Sustainability through diversified and inclusive economic opportunities



- 3,046 individuals trained and upskilled
- 45 viable cooperatives established in fenceline sites\*
- 100 trained beneficiaries employed or engaged in a business



**Environment**  
Promoting environmental sustainability is a responsibility at every level



- 15 tonnes of carbon sequestered
- 72,000 kg of plastics recycled per year
- 37 communities with established continuing environmental programs



**Disaster Response**

- Bring short- and long-term relief to those affected by disasters

\*Adjusted targets based on 2023 progress

## OUR PROGRAM SPENDING AND DONATIONS

### 2024 HIGHLIGHTS

PSFI spent a total of PHP 855.4 million for its various sustainability programs across its seven thematic areas, with PHP 175.5 million provided as in-kind donations.

**Nutrition and Food Security**

**Education**

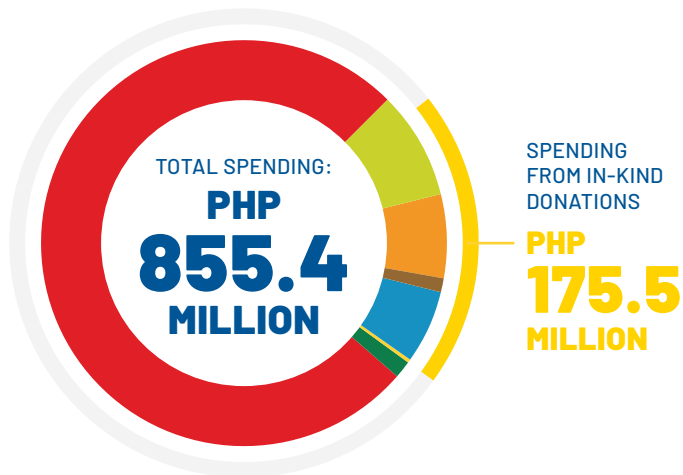
**Environment**

**Health & Safety**

**Energy**

**Disaster Response**

**Livelihood**







*“Real progress happens when vision meets action and when partnerships are rooted in purpose.”*

## MESSAGE FROM OUR CHAIRMAN

As I look back on this year and the journey we have taken together, I am filled with pride, hope, and deep gratitude. Serving with PSFI has been one of the most meaningful chapters of my life. In 2024, we saw that real progress happens when vision meets action and when partnerships are rooted in purpose.

This year, we built on our strong foundation to deliver transformative impact. Through the launch of RTS Pasacao 2.0 in Sta. Rosa del Sur, we have extended our reach to more families in need of nourishment, clean water, and healthcare. This was made possible through our partnership with

Metrobank Foundation, Inc. and the collaborative efforts of our consortium partners—World Vision, Manila Water Foundation, and our local government units. We also began Phase 2 of the Family Care Centers for Aeta Mag-Ansti communities in Pampanga and Tarlac under the Roots to Shoots program in partnership with Bloomberg Cultural Foundation, Inc. These efforts brought vital nutrition and livelihood support to six indigenous communities.

We reached remarkable milestones in our agriculture programs. STF Bombon was certified by the Agricultural Training Institute as a Learning Site for Agriculture II and accredited by TESDA to offer two courses in agricultural production. These recognitions reflect our conviction that empowering farmers through knowledge creates lasting ripples of change that extend across generations.

This year also marked several transitions. After 15 years of service in Pililla, we formally concluded our work in the area, leaving behind a legacy of sustainable farming practices and strengthened local leadership. In Palawan, the PEAP farm was turned over to the

provincial government and is now operated by the newly formed El Nido Agricultural Cooperative. What began as a project has become a sustainable community solution.

Across all our pillars, we saw impact in motion. The Movement Against Malaria distributed over 130,000 nets in Southern Palawan and was recognized as a finalist at the CSR Guild Awards. Our SKIL scholars gathered for the PSFI Scholar's Grand Reunion, bringing together 237 participants from Luzon, Visayas, and Mindanao in a celebration of realized dreams and bright futures.

I am humbled by what we have achieved together. Thank you for allowing me to serve. As PSFI continues its journey, may we remain united by purpose, committed to people, and inspired by the belief that no one should ever be left behind.

**CESAR A. BUENAVENTURA**  
Chairman



*“Our initiatives do more than address immediate needs—they create pathways for sustainable progress.”*

## MESSAGE FROM OUR PRESIDENT

At the core of every milestone lies a shared commitment to service. In 2024, Pilipinas Shell Foundation, Inc. (PSFI) once again demonstrated the power of purpose, people, and partnerships in driving meaningful and lasting change.

With the steadfast support of Shell Pilipinas Corporation and its business units, we positively impacted over 10,000 beneficiaries across 21 barangays nationwide. These efforts reflect our enduring connection with the fenceline communities surrounding key facilities and assets of the downstream business—underscoring our collective dedication to inclusive growth and community resilience.

This year, our work received recognition on both national and global platforms. I am proud to share that Shell companies in the Philippines were honored with the Grand Stevie Award for the Transformative Impact of PSFI. This accolade not only celebrates our programs but also pays tribute to the farmers, entrepreneurs, educators, and volunteers whose lives have been uplifted through our shared efforts. It affirms that our initiatives do more than address immediate needs—they create pathways for sustainable progress.

Our NXplorers Philippines program earned distinction at the Global NX Inspiration Awards, spotlighting students and mentors who are innovating for a better tomorrow. Meanwhile, Shell LiveWIRE was recognized as the Outstanding CSR Project in Enterprise Development at the 2025 CSR Guild Awards.

We also had the privilege of presenting our disaster response model at the United Nations Asia-Pacific Ministerial Conference on Disaster Risk Reduction—an invaluable opportunity to share our experiences and learn from global best practices.

Our commitment to education and skills development continues to bear fruit. Seven PhilDev scholars have joined Shell Philippines, bringing with them the values and expertise cultivated through years of learning and leadership. Additionally, 227 SKIL scholars were trained and equipped with practical skills, opening doors to meaningful employment.

In times of crisis, PSFI remained a reliable and responsive partner. Through Project Shelter, we activated ten disaster response operations, reaching over 28,000 individuals. Moreover, 45 Shell Mobility stations served as donation hubs under the Shell Disaster Response Network—demonstrating how business and community can collaborate in both preparation and response.

To our dedicated teams, valued partners, and resilient communities—thank you for your unwavering belief in our mission. Together, let us continue to build a future anchored in service, fueled by innovation, and inspired by hope.

**LORELIE Q. OSIAL**  
President



*“We carry these achievements forward with pride, knowing that every milestone brings us closer to our vision of empowered communities and sustainable progress.”*

## MESSAGE FROM OUR EXECUTIVE DIRECTOR

This year, PSFI continued to evolve, not just as an implementer of programs but as a trusted partner, a learning organization, and a visible force in the development sector. The milestones we reached in 2024 reflect both the depth of our local engagement and the strength of our global partnerships.

We launched AgrElevate in Leyte, in partnership with the BPI Foundation, to support farmers and fisherfolk in strengthening their food systems and building more resilient livelihoods. In Bombon, with the support of the Embassy of Japan, we completed and inaugurated a new food processing facility that will expand income opportunities for local communities. These initiatives represent what is possible when shared goals are met with shared action.

Our leadership extended beyond borders as we joined international platforms to share our experiences and learn from others. We participated in global meetings on HIV prevention outcome monitoring in Botswana, regional pooled procurement in Thailand, and malaria elimination in Malaysia. These engagements help ensure our programs are informed by evidence and best practices and that our voice adds value to global conversations.

We have achieved 80 out of 81 provinces that eliminated indigenous cases of Malaria and are well on the way to eliminating this scourge from our country!

We also renewed our partnership with Takeda for the Patient Assistance Program, reaffirming our long-standing commitment to providing life-

saving medication to those most in need. At home, we celebrated the first batch of graduates from the new TechVoc Scholarship Program in partnership with Manila Golf and Country Club Foundation, Inc., a step forward in expanding access to quality technical education.

In 2024, we raised the bar in how we tell our story. We published over 80 stories that highlight human impact, grew our online community by more than 8 percent, and achieved a top ranking among leading corporate foundations. We also unveiled a refreshed PSFI logo, reflecting our commitment to both tradition and innovation.

Internally, we strengthened our team by creating new program and project roles, implementing a more agile structure, introducing our code of discipline, and conducting a market-based pay review to support a high-performing and purpose-driven workforce.

Our senior managers also gave back by sharing over 45 hours of learning with other CSR professionals, reinforcing PSFI's leadership in the sector.

We carry these achievements forward with pride, knowing that every milestone brings us closer to our vision of empowered communities and sustainable progress.

**SEBASTIAN C. QUINIONES, JR.**  
Executive Director





# NUTRITION AND FOOD SECURITY

PSFI is dedicated to addressing malnutrition and food insecurity to cultivate a healthier society. Its programs focus on advancing sustainable agricultural practices in alignment with UN SDG 2: Zero Hunger, increasing access to nutritious food and clean water, and promoting healthy eating habits to combat these pressing issues.

### THE PROGRAMS:

- Agricultural Services to Elevate Farmers towards Sustainable Food Security and Livelihood (AgrElevate)
- Food Processing Training Center
- Future Filipino Farmers (3FP)
- Integrated Farming Bio-systems (IFBS)
- Rice Competitiveness Enhancement Fund (RCEF)
- Roots to Shoots
- Shell Training Farms (STF)

### 2024 AT A GLANCE:



Over **150** individuals completed upskilling training, strengthening their skills in farming and fisheries



**50** farmers completed specialized training in High-Quality Inbred Rice Production, Seed Certification, and Farm Mechanization



Nearly **1,800** farm visitors learned about organic farming and climate-smart agriculture



Over **12,000 kilograms** of organic rice and vegetables produced



Over **2.1 tons** of crops were harvested, exceeding the target of 2,000 kg



Nearly **90** organic swine and ducks harvested

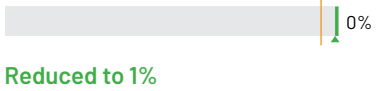


More than **5,000 kilograms** of organic fertilizer generated

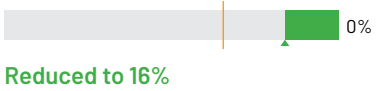
## PROGRESS TO 2025 TARGETS

### 2025 TARGETS

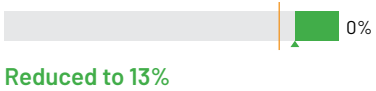
**Reduce to 5% or below**, the prevalence of wasting (low weight for height/length) among children under 5 years old



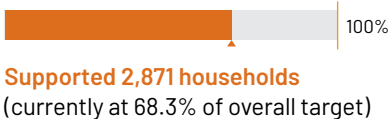
**Reduce to 34.69% or below**, the prevalence of stunting (low height/length for age) among children under 5 years old



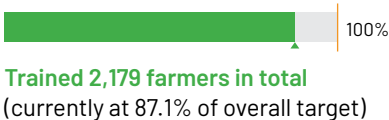
**Reduce to 17.9% or below**, the underweight (weight for age) among children under 5 years old



**4,200 households** with access to and ability to obtain nutritious food



**2,500 trained farmers** have applied sustainable farming technologies



**5% increase** in average farm income and monthly household income

**17% increase in income**



## AGRELEVATE

PSFI, in partnership with the Bank of the Philippine Islands (BPI) Foundation, continued to drive inclusive rural development through the Agricultural Services to Elevate Farmers towards Sustainable Food Security and Livelihood (AgrElevate) program. Now in its second year, AgrElevate supported communities in Leyte by strengthening food systems and enabling sustainable sources of income for farmers and fisherfolk.

Guided by a farm-to-table approach, AgrElevate provided targeted training to build local capacity and resilience in 2024. 39 individuals trained in coconut and coconut by-product processing, 35 gained skills in operating and maintaining farm machinery, and 34 were upskilled in community seed banking to promote sustainable planting practices. These were complemented by the distribution of livelihood support: 174 farmers received farm inputs during the Municipality of Leyte's Agri Aqua Fair, 124 fisherfolk were equipped with mussel and oyster culture modules, and two service boats were turned over to enhance fishing activities. Additionally, rice seeds and organic fertilizers were provided to 50 farmers.

Reaching over 300 individuals, the program not only increased agricultural productivity but also helped stabilize livelihoods and promote environmental stewardship. Through the AgrElevate initiative, PSFI and the BPI Foundation reinforce their shared mission to enable community-driven development by providing tools, knowledge, and opportunities for long-term food and income security.



## FARMS AND SHELL TRAINING FARMS

In 2024, PSFI reinforced its commitment to sustainable agriculture through its Food and Agriculture Resource Management Services (FARMS) and Shell Training Farms (STFs), which serve as hubs for agri-based learning, innovation, and livelihood generation.

STF-Bombon hosts key programs such as the Food Processing Training, Integrated Farming Bio-System (IFBS), Joint Delivery Voucher Program (JDVP), and Rice Competitiveness Enhancement Fund (RCEF). By the fourth quarter of 2024, STF-Bombon upskilled 303 farmers across various courses, with 67 completing training in vegetable and coconut food processing. As part of the Embassy of Japan-supported Community Skills and Enterprise Development project, 26 farmers gained knowledge in food processing, and 14 women-farmers graduated from a meat processing course. STF-Bombon also received important equipment, including a Composting Facility for Biodegradable Wastes and a mechanical weeder from the Department of Agriculture.

Meanwhile, STF-Palawan thrived as a learning and enterprise hub, equipping farmers and fisherfolk with essential skills and market access. The transition of STF-Palawan to the local government unit and the conclusion of STF-Pililla reflect PSFI's focus on long-term impact, empowering communities to sustain progress independently and promote food security.



## FOOD PROCESSING TRAINING CENTER

In October 2024, PSFI and the Embassy of Japan inaugurated the Food Processing Training Center in Bombon, Camarines Sur, a significant milestone made possible through Japan's Grant Assistance for Grassroots Human Security Projects. As the implementing partner, PSFI broadens livelihood opportunities by providing accredited training in food processing and sustainable agriculture, complementing the learning programs at STF-Bombon.

Farmers from 10 barangays gained practical skills and tools to develop value-added products, improve income, and build long-term, sustainable agri-enterprises that strengthen community resilience and local economies. This training expanded livelihood options and helped increase household incomes through product diversification.

## FUTURE FILIPINO FARMERS

The Future Filipino Farmer Project (3FP) continued its mission of empowering local farmers in Bombon, Camarines Sur through climate-smart, sustainable agriculture. Implemented in partnership with the Department of Agriculture Region 5 and the Central Bicol State University of Agriculture (CBSUA), the project focused on crop and animal production, organic fertilizer development, and the introduction of innovative technologies.

In 2024, CBSUA engineers evaluated the pressurized irrigation system installed at the Shell Training Farm to ensure efficiency and sustainability, contributing PHP 20,000 in technical support. The project also monitored two farmer groups who replicated the 3FP model, including the Magarao Vegetable Grower Association (MAVEGA), which saw a 20% increase in vegetable yields and expanded its swine production through piglet dispersal.

The project recorded steady gains across key components: 66% overall accomplishment in animal production, 54% in crop production, and 107% in vermicomposting. Total revenue from farm sales reached PHP 398,155.



With growing interest in replicating its model, 3FP is demonstrating its potential to transform farming communities in Camarines Sur through innovation, livelihood support, and farmer-led sustainability.





### INTEGRATED FARMING BIO-SYSTEMS

In 2024, the Integrated Farming Bio-Systems (IFBS) program surpassed its target by training 158 farmers through flexible modular or full 56-hour sessions covering crop production, agroforestry, farm waste conversion, and bio-organic fertilizer making. Each participant crafted a farm plan and adopted at least one new farming module, resulting in 105% of trainees reporting increased agricultural income.

Since its start in 1989, IFBS has continuously evolved alongside advances in agriculture. Its recent rebranding underscores PSFI's enduring commitment to promoting sustainable, resource-efficient, and climate-smart farming systems that empower communities and bolster local food security. The program's success continues to translate into income improvements and strengthened community food systems.



### RICE COMPETITIVENESS ENHANCEMENT FUND PROGRAM

Aligned with national efforts to enhance the rice industry, PSFI integrated the Rice Competitiveness Enhancement Fund Program (RCEFP) into the Shell Training Farm in Bombon, Camarines Sur. The program offers training in modern rice farming, pest management, seed certification, and mechanization. In 2024, RCEFP exceeded expectations, with 158% of its target participants completing at least 24 hours of skills training.

Through RCEFP, 50 farmers received advanced training in high-quality rice production and farm mechanization, with half completing an extended 112-hour course combining technical skills and entrepreneurship. This initiative strengthens farmers' skills and competitiveness, empowering them to adapt and thrive in the evolving rice sector.

### JOINT DELIVERY VOUCHER PROGRAM

In 2024, PSFI's STF-Bombon officially partnered with the Department of Education's Joint Delivery Voucher Program (JDVP) to enhance agricultural education for Senior High School students. The farm now offers accredited courses in Agricultural Crop Production NC II and Organic Crop Production NC II to Grade 12 students from participating public schools.

This partnership was formalized through a Board Resolution that ensured full compliance with the Senior High School Technical-Vocational-Livelihood (SHS-TVL) Curriculum Standards. The program supports classes with up to 25 learners each, following DepEd's pedagogical and assessment guidelines as outlined in DepEd Order No. 8, Series of 2015.



### ROOTS TO SHOOTS

The Roots to Shoots (RTS) program, a partnership between PSFI, Manila Water Foundation (MWF), and World Vision Development Foundation (WVDF), addresses malnutrition through integrated interventions in nutrition, food security and livelihood (FSL), water, sanitation, and hygiene (WASH), and Mother and Child Care (MCC).

RTS Pasacao 2.0, supported by Metrobank Foundation, helped 39 families start home vegetable gardens, growing diverse crops to improve nutrition and food access. 52 caregivers completed the Go Baby Go program, while nine children showed healthy weight gains through Positive Deviance Hearth sessions. Financial literacy training also equipped 46 participants with budgeting and small business skills.

Meanwhile, Phase II of the Aeta Family Care Centers RTS (FCC-RTS), in partnership with Clark Development Corporation and Bloomberry Cultural Foundation, finished two care centers and trained 222 caregivers on home gardening, providing seed kits and tools. Nearly 200 caregivers graduated from nutrition sessions, sharing positive changes in child care. A WASH Group was formed to manage a new deep well, improving community access to clean water. These efforts reflect a holistic approach to promoting nutrition, resilience, and sustainable livelihoods for vulnerable families.



## HEALTH AND SAFETY

PSFI's Health and Safety programs focus on building community resilience against illnesses and other adversities by promoting health education and improving access to quality healthcare and safety resources.

#### THE PROGRAMS:

- BiyaHERO
- HIV Philippine Response to Optimize Testing, Empowered Communities, Treatment and Sustainability (PROTECTS)
- Upscaling Programs and Services to the Communities Affected by and Living with HIV to end the Epidemic (PROTECTS UPSCALE)
- Movement Against Malaria (MAM)
- Patient Assistance Program
- Response to Communities Under Emergencies (RESCUE)

#### 2024 AT A GLANCE:

-  **200** individuals trained on road safety
-  **533,119** people benefited from improved healthcare services
-  **413** individuals trained, with 322 in disaster preparedness and response and 91 in fire safety
-  **262,656** individuals accessed health facilities for malaria testing, consultations, and treatment
-  **70,589** people accessed health facilities for consultations, testing, preventive advice, and health financing
-  **8,939** cases of diseases and outbreaks were prevented or reduced

## PROGRESS TO 2025 TARGETS


#### 2025 TARGETS

**Zero** indigenous malaria cases

**Maintain zero** accident-related injuries and mortality in catchment sites

**Assistance for patients in need**

#### 2024 PROGRESS & STATUS

 **8,952** indigenous Malaria cases

**Accomplished**

**915** patients enrolled since inception in 2017, where **482** have completed treatment


#### 2030 TARGETS


**95%** of people living with HIV (PLHIV) know their status


**95%** of PLHIV are receiving antiretroviral therapy (ART)

**95%** of people with HIV treatment have a suppressed viral load

#### 2024 PROGRESS & STATUS

 **63% of the total estimated number of PLHIV** (135,026 out of an estimated 215,400 individuals)

 **67% of all diagnosed PLHIV** (90,854 out of 135,026 PLHIV)

 **45% of all PLHIV on ART** (43,534 out of the 90,854 PLHIV on ART who were tested for viral load or 95% (41,164) were virally suppressed)





## BIYAHERO PROGRAM

The BiyaHERO Program promotes road safety and prevents accidents by equipping individuals with the knowledge and skills to handle road emergencies. In 2024, the program trained 200 individuals on road safety, provided 16 barangays with traffic signs and symbols to improve infrastructure, and trained 200 mentors to advocate for responsible road use and emergency preparedness within their communities.

These efforts were further reinforced in the fourth quarter through the BiyaHERO for Community Program in Batangas. Road safety signs were turned over to Barangay San Isidro, while solar blinkers were installed in Brgys. Dumuclay, Sampaga, and Dalig, in partnership with the Traffic and Discipline Regulatory Office (TDRO). BiyaHERO-trained mentors worked alongside TDRO to identify key installation sites along the Startoll-Pinamukan Bypass Road. Additional road safety materials were handed over to TALIM communities in December to support safer and more informed mobility practices.



## RESPONSE TO COMMUNITIES UNDER EMERGENCIES

Aligned with PSFI's goal to strengthen local disaster resilience, the Response to Communities Under Emergencies (RESCUE) program focused on improving community preparedness through capacity-building and infrastructure support. In 2024, over 400 individuals were trained in fire safety and emergency response. PSFI supported the inauguration of a fire sub-station in Calapan City and a community fire station in Bacolod, enhancing local response capabilities. In Pasacao, PSFI reaffirmed its partnership with the LGU to sustain safety initiatives such as CAS and BiyaHERO. These efforts demonstrate PSFI's continued role as a development enabler in building safer, more responsive communities.



## HIV PROTECTS UPSCALE

To reduce HIV infections and improve healthcare access among high-risk groups, including men who have sex with men (MSM), transgender individuals, people who inject drugs (PWIDs), and persons deprived of liberty (PDL), HIV PROTECTS UPSCALE continued to expand its reach and impact. The program provided testing, treatment, and preventive care to 450,859 individuals, with 418,299 clients tested for HIV. Of these, 16,146 clients were reactive, 12,882 were newly diagnosed or confirmed reactive, and 11,184 PLHIV were successfully enrolled in treatment or ART.



## MOVEMENT AGAINST MALARIA

The Movement Against Malaria (MAM) is a nationwide initiative focused on reducing Malaria cases and improving healthcare access in underserved communities. It supports Malaria elimination by providing free malaria testing, distributing insecticide-treated bed nets, conducting community education for early detection, and ensuring accessible treatment facilities for those diagnosed. In 2024, MAM upgraded 24 health facilities and provided essential services to over 533,000 individuals, strengthening both prevention and response efforts across high-risk areas.

## PATIENT ASSISTANCE PROGRAM

The Takeda Patient Assistance Program (TPAP), launched in 2017 as a collaboration between PSFI, Takeda Pharmaceuticals, and Axios International, provides free medications to cancer and complex disease patients. In 2024, TPAP distributed 1,855 vials of medication valued at PHP 213.78 million through 83 health facilities and 115 physicians. The program enrolled 872 new patients and supported 482 individuals in successfully completing their treatments, marking significant growth in both accessibility and treatment outcomes.




## EDUCATION


PSFI's Education programs aim to expand access to quality learning opportunities, particularly in Science, Technology, Engineering, and Mathematics (STEM) and technical-vocational education. These initiatives empower beneficiaries to thrive and build a brighter, more resilient future by equipping students with essential skills and knowledge.


### THE PROGRAMS:

- Bloomberry Medical Scholarship Program
- Gas Mo, Bukas Ko (GMBK)
- Manila Golf and Country Club (MGCC) Foundation Tech-Voc Scholarship Program
- Science and Technology Education Program (STEP)
- Shell Employees Dependent Scholarship Program (SESDP)
- Shell NXplorers
- Shell PhilDev Scholarship Program
- Shell Tabangao Ladies Circle (STLC)
- Unlad sa Pasada (USP)

### 2024 AT A GLANCE:

 **365** students and **97** teachers trained in STEM

 **29** scholars supported, including new intakes and graduates, with 5 new scholars admitted and 8 successfully graduating

 **303** scholars supported across various fields

## PROGRESS TO 2025 TARGETS

### 2025 TARGETS

Support 500 scholars

Increase the proportion of target scholars employed or engaged in business

### 2024 PROGRESS & STATUS

Supported 2,022 scholars in total

 100%  
Had 91 scholars employed or engaged in business (reached 91% of total target)

Train 2,022 students in problem-solving skills

2,986 students trained across various interventions (reached 147.7% of the overall target)

## GAS MO, BUKAS KO (GMBK)

The Gas Mo, Bukas Ko (GMBK) Program expanded economic opportunities for Shell Mobility staff through technical-vocational training and TESDA certification. A joint effort by Pilipinas Shell Petroleum Corporation-Mobility, the Association of Pilipinas Shell Dealers, Inc., and PSFI, the program equips staff with skills in automotive servicing, cookery, bookkeeping, and more. In 2024, GMBK exceeded recruitment targets by 10%, renewed collaboration with Mobility Retail via a new MOA, provided leadership training, and achieved a 100% certification pass rate. Course completers in cookery and bread and pastry were promoted, demonstrating the program's impact on workforce development and inclusive growth.

## MANILA GOLD AND COUNTRY CLUB (MGCC) FOUNDATION TECH-VOC SCHOLARSHIP PROGRAM

To create sustainable livelihood opportunities for Manila Golf caddies, outsourced personnel, and their families, PSFI, in partnership with the Manila Golf and Country Club (MGCC) Foundation, offers targeted vocational training that builds marketable skills and enhances local capacity. Recruitment for the 2024 cycle ran from June to August, successfully onboarding 30 scholars in September, including 20 caddies and 10 Barangay Pitogo residents. The scholars participated in a LEAD Workshop and began skills training in Bread and Pastry Production, Massage Hilot Wellness, and Cookery through active engagement with Technical and Vocational Education and Training (TVET) partners. Notably, 10 Massage Hilot Wellness scholars passed their institutional and TESDA National Certification Level II (NCII) assessments in December, validating the quality and relevance of their training. Remaining scholars are on track to complete their courses by early 2025. Through these efforts, PSFI strengthens community resilience by equipping participants with industry-recognized certifications that improve employability and income potential.



SCIENCE AND TECHNOLOGY EDUCATION PROGRAM (STEP)

STEP supports STEM students from Batangas through financial assistance, mentoring, and community engagement, preparing them for career opportunities within and beyond Shell. In 2024, 50 scholars received full-year allowance assistance, thesis support, and special incentives awarded to top-performing students. Mentoring sessions held in April, August, and December tackled time management, mental health, and career readiness, alongside LEAD workshops and Shell Import Facility Tabango (SHIFT) site visits. Scholars also joined community initiatives such as Brigada Eskwela, Alay Lakad 2024, and Volunteerism Day. They actively participated in Community Ugnayan Sessions and the Batangas Social Development Culmination Day 2024. A joint year-end celebration with STLC scholars capped the year, honoring the scholars' growth and resilience.

SHELL EMPLOYEES' DEPENDENT SCHOLARSHIP PROGRAM (SEDSP)

Launched in 2005, the Shell Employees' Dependent Scholarship Program (SEDSP) continues to support the educational journeys of qualified dependents of Shell employees by providing scholarships for both high school and college students. The program received nine applications for the school year 2024-2025, with seven students qualifying and receiving support. Throughout 2024, a total of 61 students benefited, including 34 college and 27 high school students of active employees, and 11 college and four high school students of retirees. The program disbursed PHP 7.3 million in scholarship funds.



SHELL NXPLORERS

Shell NXplorers, Shell's global STEM program implemented by PSFI, continued to empower students and educators across the Philippines in 2024. A total of 289 students from partner schools in Metro Manila, Cebu, Baguio, Batangas, Oriental Mindoro, and La Union participated in hands-on workshops focused on the Food-Water-Energy Nexus. The program also strengthened facilitation skills among teachers, fostering critical thinking, problem-solving, and collaboration. Highlighting its impact, the Global NX Inspiration Awards, a global recognition platform celebrating excellence in STEM education, recognized three of the four nominations from the NXplorers PH Team. Awards included two Inspiring Mentors, one Exceptional Student Project, and one Outstanding Student Team. Through these efforts, NXplorers is shaping a new generation ready to address complex sustainability challenges in their communities.



SHELL PHILDEV SCHOLARSHIP PROGRAM

The Shell-PhilDev Scholarship Program, implemented in partnership with the Science and Technology Foundation Manila Inc. (PhilDev), continued to support promising Science and Engineering students across eight partner universities in 2024. The program welcomed 24 new scholars and hosted leadership camps that engaged students from Visayas, Mindanao, and across the country, including a major annual camp attended by 40 scholars. 10 scholars graduated this year, with seven passing their board exams. Employment successes include one alumnus appointed Terminal Manager, three hired at Shell Business Operations, and three more into Shell's broader network. The program's impact was further recognized by PhilDev on September 21 as a key partner in advancing STEM advocacy, reinforcing Shell-PhilDev's commitment to nurturing the next generation of STEM leaders with continued mentorship and support from Shell employee-volunteers.

SHELL TABANGAO LADIES CIRCLE (STLC)

The Shell Tabangao Ladies Circle (STLC) Scholarship Program supports the holistic development of senior high school students from Tabangao, Ambulong, Libjo, San Isidro, and Malitam by providing monthly allowances, academic guidance, and mentorship to help them succeed in their educational journeys and beyond. In 2024, the program supported 31 senior high school scholars, 18 of whom completed their studies in July and received graduation incentives. Five new scholars were onboarded in August, bringing the active scholar count to 13.

To promote personal growth and well-being, scholars joined mentoring sessions focused on mental health in academic life, along with virtual catch-up sessions throughout the year. A special year-end activity was held, together with the STEP scholars, to recognize their milestones for the academic year. Meanwhile, PSFI staff participated in the Community Ugnayan Sessions and the Batangas Social Development Culmination Day to share information about PSFI's scholarship programs and strengthen community engagement.

UNLAD SA PASADA (USP)

Unlad sa Pasada (USP) empowers public utility vehicle drivers and their families by providing skills training and scholarships to help build sustainable livelihoods and access better opportunities. A collaboration between PSFI and Pilipinas Shell Petroleum Corporation-Mobility, USP targets loyal Shell GO+ members and their dependents. In 2024, the program met 100% of its recruitment target, onboarding 60 scholars for Basic Entrepreneurship and 10 for technical-vocational courses. All technical scholars passed the NC 1 Assessment and earned certification. USP expanded its reach by engaging Grab drivers, their families, and PUV associations, while strengthening collaboration with Mobility Marketing. Additionally, scholars in cookery and bread and pastry completed their courses in December 2024, advancing USP's mission of community empowerment.

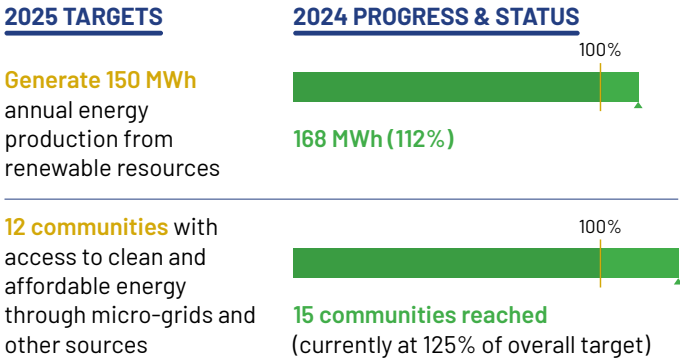


PSFI empowers communities by providing access to affordable, cleaner, and more efficient energy solutions, with a focus on remote areas through the SINAG project, supporting SDG 7: Affordable and Clean Energy.

THE PROGRAM:  
• Save, Invest, Nurture Access to Energy (SINAG)

2024 AT A GLANCE:  
7 SINAG microgrids handed over to local government units and Community Electric Associations for community-led energy management

PROGRESS TO 2025 TARGETS



SAVE, INVEST, NURTURE ACCESS TO ENERGY (SINAG)

PSFI's Save, Invest, Nurture Access to Energy (SINAG) program promotes inclusive development by providing sustainable energy access to off-grid communities in Palawan, advancing national energy equity and local resilience through renewable sources like solar, wind, and hydro.

Electric Associations held General Assemblies in Taytay, San Vicente, and El Nido to prepare for the program's conclusion and transition into cooperatives. Mr. Joel Gomez from the Municipal Cooperative Development Office and Mrs. Beth Pineda from the Provincial Cooperative Development Office guided discussions on governance, resource management, and community engagement.

Capacity-building efforts included technical training on system maintenance and workshops on financial management and governance to equip community leaders with the skills to manage energy systems independently.

On November 25, all seven SINAG microgrids were formally handed over to local government units and Community Electric Associations, marking a key milestone toward sustainable, community-led energy management.

IMPACT STORY:  
LIGHTING UP SITIO TAGNAYA: SOLAR POWER REACHES FAMILIES IN BATAK, PALAWAN

Over 50 households in the Batak community of Sitio Tagnaya, Puerto Princesa, Palawan, received stand-alone solar units from PSFI's SINAG Program. This initiative, held in partnership with the Local Barangay Council of Concepcion and the City Health Office, addressed the community's critical need for power.

Sitio Tagnaya's isolation—nearly two hours of walking from the National Highway—has left the community off the grid for years, hindering both education and livelihood. With solar power, children can study after dark, and adults can continue their handicraft production.

The solar units were distributed in May, with support from donations to PSFI's SINAG crowdfunding campaign and Shell employees. PSFI also conducted Malaria blood smearing and distributed mosquito nets to help protect the community from health risks.

This initiative is vital to empowering the Batak community, improving their daily lives, and providing them with the tools for a brighter, more sustainable future.





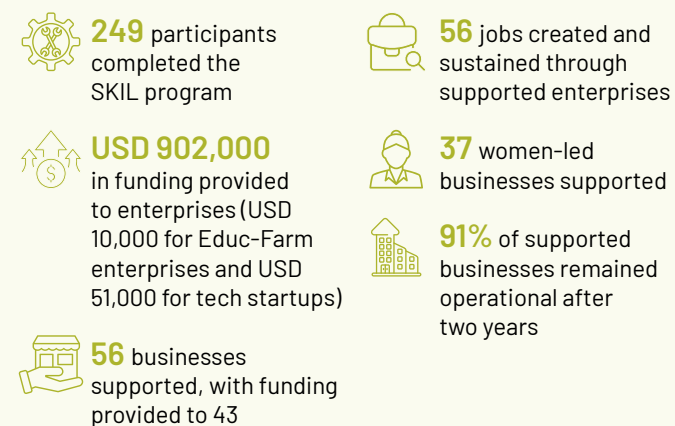
## LIVELIHOOD

To address unemployment and poverty in fenceline communities, PSFI invests in livelihood development by equipping beneficiaries with the resources and skills needed for self-sufficiency. Through agricultural, technical-vocational, and job-readiness training, the Foundation supports sustainable livelihoods and MSME growth, contributing to SDG 8: Decent Work and Economic Growth.

### THE PROGRAMS:

- Sanayan sa Kakayahang Industrial (SKIL)
- Shell LiveWire - Acceleration Program (AP) and Community Enterprise Development Program (CEDP)

### 2024 AT A GLANCE:



## PROGRESS TO 2025 TARGETS

### 2025 TARGETS

**Train and upskill 3,046 individuals**

**Establish 45 successful cooperatives** at fenceline communities

**Assist 100 beneficiaries** in finding employment or starting a business

### 2024 PROGRESS & STATUS

**Trained 38,354 individuals in total** (currently at 127.8% of overall target)

**Established 73 cooperatives in total** (currently at 912.5% of overall target)

**100 more beneficiaries employed or engaged in business** (currently at 100% of overall target)

### SANAYAN SA KAKAYAHANG INDUSTRIYAL

Since its inception in 1982, the Sanayan sa Kakayahang Industriyal (SKIL) program has been a key initiative by PSFI to empower individuals with technical-vocational skills, providing them with the necessary tools for better employment opportunities. In 2024, SKIL exceeded its targets with 249 graduates, 227 certifications earned, and 207 participants trained, significantly contributing to long-term project sustainability. In Batangas, 12 scholars graduated on November 14, 2024. In Palawan, 25 scholars successfully completed training in Shielded Metal Arc Welding (SMAW NC I) and received toolkits during the culmination on November 25, 2024. In Iloilo, 49 scholars, including 24 in SMAW and 25 in Electrical Installation and Maintenance, completed their training and were recognized during the Culmination Day on October 23, 2024. Other regions, including Bacolod, Tacloban, Tagbilaran, and Cagayan de Oro, also saw SKIL scholars graduate, with 95% of participants reporting enhanced skills and better economic opportunities.



## SHELL LIVEWIRE - ACCELERATION PROGRAM AND COMMUNITY ENTERPRISE DEVELOPMENT PROGRAM

Launched in 2020, Shell LiveWire continues to drive innovation and entrepreneurship across communities by offering a comprehensive program that enhances market access, improves enterprise management, and provides access to capital. In 2024, Shell LiveWire successfully supported 56 businesses and created 56 jobs, emphasizing women-led enterprises. The program awarded PHP 88,912 in funding and PHP 60,000 and PHP 150,000

in support for various community enterprises. After completing the Shell LiveWire training, entrepreneurs had the opportunity to pitch their business plans, and the program offered tailored in-kind and financial support, to help businesses grow and thrive. This strategic approach ensures enterprises remain sustainable and operational, even after two years of support.

### IMPACT STORY:

## BREWING CHANGE: GINA LEADS A WOMEN'S COFFEE ENTERPRISE

Gina Diaz, president of the Barangay Health Workers Association in San Fernando, La Union, embraced the challenge of leading the Kalipunan ng Liping Pilipina (KALIPI) Poro chapter—an organization dedicated to empowering Filipino women. With a vision to bring the rich flavors of Baguio coffee to their community, Gina and her 26-member group launched a hand-crafted drip coffee venture.

Through the Shell LiveWIRE program and support from PSFI, they received essential training and resources, allowing them to produce 128 units in their first launch and secure loyal customers. The initiative also fostered confidence, unity, and growth beyond business, aligning with PSFI's mission of empowering communities and driving sustainable, inclusive development.

Gina remains optimistic about the future, seeing the potential for greater impact in their community.

*"Kung mabibigyan ng ganitong pagkakataon, tulad sa amin sa Shell LiveWIRE, tapusin natin ang naumpisahan. Makakatulong ito sa atin, sa komunidad, at sa mga kababaihan."* (If given such an opportunity, like we had with Shell LiveWIRE, we'll finish what we've started. It will help us, our community, and women.)







## ENVIRONMENT

PSFI aims to promote biodiversity conservation and strengthen community-led climate adaptation. Through initiatives across operational sites and partner communities, PSFI fosters environmental sustainability and resilience to climate change, nurturing a culture of stewardship that supports SDG 13: Climate Action.

### THE PROGRAMS:

- Turismo at Negosyo Dulot ng Ingat Kalikasan (TANDIKAN)
- Tubbataha Conservation

### 2024 AT A GLANCE:



**32** seaborne patrols conducted across the North and South Atolls and Jessie Beazley Reef



**1,500** children reached through the "I Am Clowny of Tubbataha" book distribution and storytelling sessions



**100,000+** Facebook interactions and **43,000+** Instagram engagements on Tubbataha Reefs Natural Park accounts



**10** sustainable tourism associations supported in El Nido and Puerto Princesa



**88** community members participated in the Sustainability Plan Workshop



**10** Community-Based Sustainable Tourism (CBST) sites formally turned over to People's Organizations

## PROGRESS TO 2025 TARGETS

### 2025 TARGETS

**Sequester 15 tons of carbon**

### 2024 PROGRESS & STATUS

**10,818 kg carbon sequestered** (currently at 72.1% of overall target)

**Recycle 72,000 kg of plastic**

**21,662 kg of plastic recycled in total** (currently at 30% of overall target)

**Assist 37 communities** in establishing and continuing environmental programs

**14 communities reached in 2024** (currently at 37.8% of overall target)

## TURISMO AT NEGOSYO DULOT NG INGAT KALIKASAN AND TUBBATAHA CONSERVATION

Since 2015, Turismo at Negosyo Dulot ng Ingat Kalikasan (TANDIKAN) has linked sustainable tourism with biodiversity conservation in Palawan, empowering communities to create livelihoods while protecting natural heritage sites like the Puerto Princesa Subterranean River National Park. In 2024, the program supported ten associations in El Nido and Puerto Princesa, with a focus on long-term sustainability.

A key event in 2024 was the General Assembly and Sustainability Plan Workshop held in November, where 88 participants developed strategies to ensure the continued success of their initiatives. The program culminated in the handover of 10 CBST sites to local People's Organizations on November 25. PSFI also met with El Nido's Municipal Tourism Office in December to address challenges and ensure the future of the community-driven projects. These efforts solidify the program's lasting impact even as it nears its conclusion.

### IMPACT STORY:

## PADDLING FORWARD: MEO AND TINA AMAR'S STORY OF HOPE, LOVE, AND RESILIENCE

As Meo wisely puts it, let love simmer like a slow-cooked dish, and it will endure any challenge that comes its way. This philosophy reflects the deep bond between Meo and Tina, who have been married for 24 years and are parents to five children. Their journey together has not been without challenges, including losing their livelihoods as tour guides during the pandemic. Yet their unwavering commitment to each other, along with the support of PSFI's Mangrove Protection and Conservation for Tourism, helped them overcome these challenges by involving them in protecting and restoring the mangrove forests vital to their community's resilience and future livelihood.

Tourists visiting the Mangrove Paddle Boat Tour in Sabang, Puerto Princesa, are welcomed by Tina and Meo, eco-tour guides whose partnership extends far beyond the tours they lead. As lifelong partners, their enduring love has become the cornerstone of both their personal and professional lives. Their story is a powerful testament to resilience, teamwork, and a love strong enough to weather any storm.

Meo's advice: "Yung pag-ibig, huwag nating gawing biglaan na tulad ng kanin na 'pag mainit, iluluwa mo agad. Kapag pumasok ka sa isang relasyon, dapat ay 'yung totoong pag-ibig na ano mang mangyari, hindi masisira 'yung pagsasama niyo." (When you enter a relationship, it should be (based on) true love—something that will not break, no matter what happens.)



## TUBBATAHA CONSERVATION

Tubbataha Reefs Natural Park, a UNESCO World Heritage Site, remains central to TANDIKAN's conservation efforts. In 2024, PSFI supported 32 seaborne patrols across the North and South Atolls and Jessie Beazley Reef, enhancing the protection of this critical marine ecosystem. To raise awareness, PSFI launched the children's book I am Clowny of Tubbataha, Praying, commemorating Tubbataha's 31st anniversary as a UNESCO site. The book was distributed to 1,500 students in Puerto Princesa and Roxas, with storytelling sessions further promoting marine conservation. Engagement on the Tubbataha Reefs Natural Park and World Heritage Site's social media soared in the last quarter of 2024, with over 100,000 interactions on Facebook and 43,000 on Instagram. This growth helped amplify efforts to protect Tubbataha's future. Through continued research and awareness-building initiatives, TANDIKAN helps ensure the long-term preservation of Tubbataha, supporting both environmental and economic resilience in the region.







## DISASTER RESPONSE

As a country acutely exposed to climate-related hazards, the Philippines needs rapid, localized response strategies. PSFI answers this need by coordinating government, private-sector, and community resources to deliver timely relief, restore essential services, and build long-term resilience. Through Shell's support, PSFI's disaster initiatives safeguard lives, strengthen local capacity, and align with the Foundation's goal of enabling safer, more resilient communities across its service areas.

### 2024 AT A GLANCE:



**28,656 individuals** and  
**7,164 families** supported



## COMMUNITY RELATIONS

PSFI believes that strong, collaborative relationships with local communities are essential for sustainable development and lasting impact. In 2024, PSFI deepened its engagement with local governments and communities, expanding its reach beyond operational sites. By actively listening to community needs and forging new strategic partnerships, PSFI reinforced its role as a trusted partner in community welfare. This approach reflects the Foundation's ongoing commitment to driving meaningful, positive change and advancing inclusive development.

## DISASTER RESPONSE NETWORK

In 2024, the Disaster Response Network (DRN) reached 7,164 families (28,656 individuals) across the Philippines, providing immediate assistance to disaster-affected communities. Shell's response to calamities such as Typhoon Carina, El Niño, and La Niña highlighted the effectiveness of its disaster relief strategies.

Key initiatives in 2024 included the activation of 46 Shell Mobility Donation Hubs, mobilizing 23 partner organizations, and raising PHP 2.3 million in prepositioned goods to support disaster-affected communities. The DRN facilitated 10 major disaster response activities, addressing severe weather events like the Northeast and Southwest Monsoons, and proactively supporting communities impacted by El Niño through a donation drive that helped 2,490 individuals. Meanwhile, Project Shelter provided essential aid to displaced families, offering temporary housing, food, water, and medical care. The year concluded with Shell's participation in the 2024 Asia-Pacific Ministerial Conference on Disaster Risk Reduction (APMCDRR) Expo, reinforcing its commitment to disaster resilience and collaboration across sectors.

Through these efforts, Shell delivered essential relief in 2024, meeting key targets and ensuring that affected communities received timely support. These efforts not only addressed immediate needs but also reinforced the long-term resilience of vulnerable regions.



### IMPACT STORY:

## RAPID RELIEF IN BOMBON: PSFI RESPONDS TO TYPHOON KRISTINE

In October 2024, PSFI stepped up to support communities severely impacted by Typhoon Kristine, particularly in the flooded areas of Bombon, Camarines Sur. Working with local partners, PSFI distributed over 1,300 hot meals and drinking water to residents in Barangays Sto. Domingo and San Jose.

The relief efforts were part of a broader initiative to assist those affected by the storm, with the Municipal Disaster Risk Reduction and Management Office (MDRRMO) reporting that more than 4,600 families were impacted by the floods. Through these actions, PSFI continues its commitment to provide timely and effective support to communities in need, ensuring their resilience in the face of natural disasters.

This initiative is part of PSFI's ongoing disaster response efforts, which have reached several other provinces affected by Typhoon Kristine.



## EDUCATION

PSFI recognizes that a conducive learning environment is essential for student well-being and academic success. In 2024, PSFI donated an industrial fan to Macabalan Elementary School in Cagayan de Oro, helping to alleviate intense heat in the school's gymnasium and support safer indoor activities for 1,240 students. Additionally, the Barangay Assembly in Palawan on October 26 engaged 180 community members, reinforcing the importance of local participation in educational development. These initiatives reflect PSFI's commitment to enhancing education and fostering community involvement in the areas it serves.

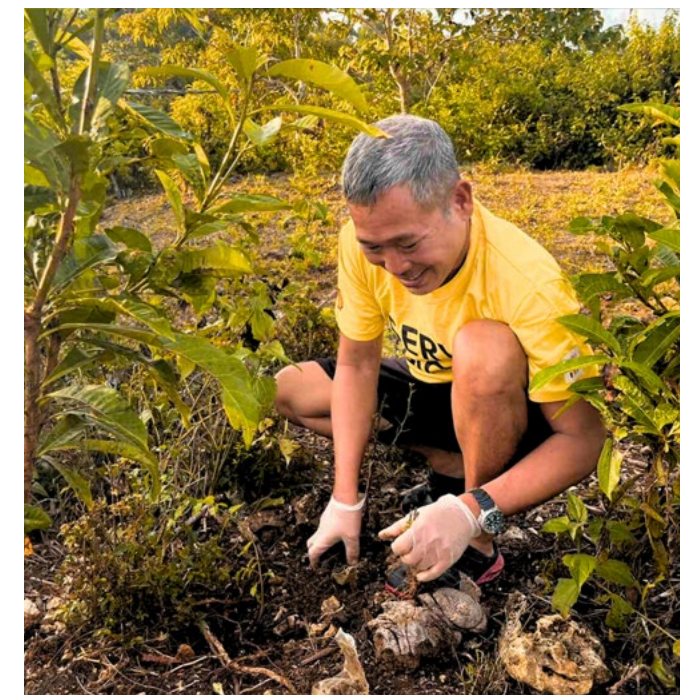
## ENVIRONMENT

Environmental sustainability remained a focal point in 2024, with PSFI executing various initiatives to enhance local ecosystems. In Cagayan de Oro, a tree planting event on October 25 resulted in the planting of 2,000 molave seedlings, contributing to the region's biodiversity. Similarly, on October 19, the foundation supported a mangrove planting event in collaboration with the Philippine Coast Guard, planting 2,000 mangrove propagules for coastal protection.

PSFI continued its environmental efforts in other regions with a mangrove planting activity in Calapan on November 21, where 500 propagules were planted in support of the Samahan ng Bakawan. In Tacloban, 200 seedlings of bani and banaba were planted on November 22 to strengthen coastal protection, reduce erosion, enhance natural flood mitigation, and support biodiversity. These initiatives highlight PSFI's commitment to preserving the environment through practical, community-driven actions.

## HEALTH AND SAFETY

PSFI supports health and safety initiatives to improve access to essential healthcare services in underserved communities. In 2024, the Doctor-Assist to Barangays program benefited communities across Batangas. The program, which ran from July to December, provided free medical consultations and medicines to local residents, with glucometer strips distributed on October 9 in Tabangao Aplaya. The program's impact extended to other barangays such as Ambulong, San Isidro, and Malitam, ensuring that essential healthcare services reached those in need.



## A COMMUNITY THAT SERVES

Aligned with Shell's global social investment goals, A Community That Serves (ACTS) provides a volunteer platform for Shell companies in the Philippines. This initiative enables employees and contractors to participate in various community programs, fostering a culture of service. In partnership with PSFI, ACTS supports initiatives that allow employees to contribute directly to local development and community well-being, reinforcing a commitment to sustainable, community-driven growth.

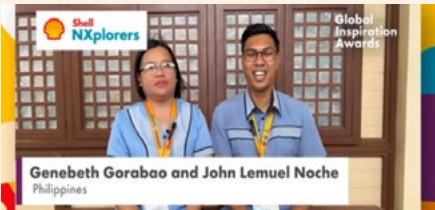
In 2024, PSFI continued to strengthen its role as a vital partner in local development across education, environmental preservation, and healthcare. By focusing on community needs and engaging strategically with local stakeholders, PSFI cultivates a culture of service and collaboration that drives meaningful and lasting impact in the communities it serves.



AWARDS AND RECOGNITION



**CHAMPION OF CHANGE**  
*(Shell NXplorers, Shell LiveWIRE)*  
37th Anniversary, Department of Science and Technology – Technology Application and Promotion Institute (DOST-TAPI)



**MERIT AWARD**, Exceptional Student Project Team  
**SILVER**, Outstanding Student Team  
**BRONZE**, Inspirational Mentors  
2023-2024 NXplorers  
Global Inspiration Awards



**MOST OUTSTANDING CSR PROJECT IN ENTERPRISE DEVELOPMENT**  
*(Shell LiveWIRE)*  
**NOMINEE FOR HEALTH CATEGORY**  
*(Movement Against Malaria)*  
2024 League of Corporate Foundations (LCF) Corporate Social Responsibility (CSR) Guild Awards



**PLAQUE OF APPRECIATION AS A PHILIPPINE NATIONAL AIDS COUNCIL (PNAC) MEMBER REPRESENTING THE YKP 2020-2024**  
Philippine National AIDS Council



**PARTNER FOR STEM ADVOCACY**  
*(PhilDev)*

TRUSTEES AND OFFICERS



**CESAR A. BUENAVENTURA**  
Chairman



**LORELIE Q. OSIAL**  
President and Vice-Chairperson



**SEBASTIAN C. QUINIONES, JR.**  
Executive Director



**REYNALDO P. ABILO**  
Chief Financial Officer



**HAROLD C. OCAMPO**  
Corporate Secretary



**EDGAR O. CHUA**  
Trustee



**MARIA DOLORES DELGADO-FANSLER**  
Trustee



**FERNANDO ZOBEL DE AYALA**  
Trustee



**PAULO ARIAS**  
Trustee



**KIT ARVIN N. BERMUDEZ**  
Trustee



**SERGIO C. BERNAL, JR.**  
Trustee



**RANDOLPH T. DEL VALLE**  
Trustee



**ALBERT A. LIM**  
Trustee



**ERWIN R. OROCIO**  
Trustee



**OSCAR S. REYES**  
Trustee



**CESAR G. ROMERO**  
Trustee

OUR PARTNERS

PRIMARY PARTNERS

Shell Pilipinas Corporation (SPC)	BPI Foundation (BPIF)
The Global Fund to fight AIDS, Tuberculosis and Malaria (GFATM)	Metrobank Foundation, Inc. (MBFI)
Bloomberry Cultural Foundation, Inc. (BCFI)	Takeda Pharmaceutical Company

MEDIA PARTNERS

ABS-CBN Corporation Batangas Press Club (BPC)	Palawan News
GMA Network Information Office – Batangas City	Philippine Star
Manila Broadcasting Company (MBC)	Radio Mindanao Network

NUTRITION AND FOOD SECURITY

Agricultural Training Institute (ATI) – Region 5	Local Government Units (LGUs) of: Bamban, Tarlac Bombon, Camarines Sur Leyte, Leyte Mabalacat, Pampanga Pasacao, Camarines Sur
Angat Buhay (Angat Pinas, Inc.)	
BPI Foundation, Inc.	
Bureau of Fisheries and Aquatic Resources (BFAR) – Region 8	
Bureau of Plant Industry-National Seed Quality Control Services (BPI-NSQC) – Region 8	
Central Bicol State College of Agriculture, Pili, Camarines Sur	Manila Water Foundation, Inc.
Central Bicol State University of Agriculture (CBSUA)	Metrobank Foundation, Inc.
Clark Development Corporation	National Commission on Indigenous Peoples (NCIP)
Department of Agriculture (DA) – Regions 5 and 8	Philippine Center for Postharvest Development and Mechanization (PhilMech)
Department of Education – Division of Camarines Sur	Philippine Coconut Authority – Region 8
Department of Education – Division of Naga City	Philippine Rice Research Institute (PhilRice)
Department of Science and Technology (DOST) – Province of Camarines Sur	Technical Education and Skill Development Authority (TESDA) – Regions 5 and 8
Department of Trade and Industry – Province of Leyte	World Vision Development Foundation, Inc.
Don Bosco Agro-Mechanical Technology Center, Legazpi City	
Embassy of Japan	

HEALTH AND SAFETY

Action for Health Initiatives Inc. (ACHIEVE)	City of Manila Health Department
AIDvocates (AIDvocates Cebu)	Community and Family Service International (CFSI)
AI Keire Support Group Inc.	Community for Positive Environment (COPE)
American International Health Alliance (AIHA)	Commission on Higher Education (CHED)
Amoma Caraga Inc.	Commission on Human Rights (CHR)
Armed Forces of the Philippines (AFP)	Community Organization to Respond and Empower (CORE) Plus
Association of Positive Women Advocates, Inc. (APWAI)	Cross Breeds Plus Negros Inc.
Axios International Consultants Limited	Dawaw Mindanao Advocates Association Inc. (Dawaw MAAI)
Bagani Southern Davao, Inc.	Dealing Against the Stigma of HIV (DASH)
Bangsamoro Autonomous Region in Muslim Mindanao – Ministry of Health (BARMM-MOH)	Department of Education (DepEd)
Bureau of Jail Management and Penology (BJMP)	Department of Health (DOH)
CARAGA Center for Health Development (CARAGA CHD)	Department of Interior and Local Government (DILG)
Cavite Positive Action Group The JCH Advocacy Inc. (CPAG)	Department of Social Welfare and Development – Central Office (DSWD CO)
Compassion Davao Four (CD4)	DSWD Field Office: VI-A – CALABARZON VIII – Region 8
Center for Health Development Region 1 (CHD-1) Region 2 (CHD-2) Region 4A (CHD-4A) Region 4B (CHD-4B) Region 5 (CHD-5) Region 6 (CHD-6) Region 7 (CHD-7) Region 8 (CHD-8) Region 9 (CHD-9) Region 11 (CHD-11) Region 12 (CHD-12) Cordillera Autonomous Region (CHD-CAR)	
Central Luzon Center for Health Development – Region 3	Eastern Visayas State University (EVSU)
	Empowerment, Leadership and Inclusion Through Education (ELITE)
	Experiential Communications Integrating Trade & Events Inc. (EXCITE Inc.)
	Family Planning Organization of the Philippines: Baguio City Davao City General Santos City Iloilo City Pampanga City Quezon City



Family Health International 360 (FHI360)	Philippine Professional Association of Transgender Health (PPATH)
Gabay sa Pulang Laso, Inc. (GPL)	Pinoy Plus Advocacy Pilipinas Inc. (PPAPI)
GATA - Gay and Transgender Advocates (GATA)	Pink Bunnies
GentleMen Bicol for Sexual and Reproductive Health and Rights Inc.	Pink Salmon Plus Association Inc.
HIV & AIDS Support House, Inc. (HASH)	Positibong Laso
International Center for AIDS Care and Treatment Programs (ICAP)	Positively Empowered People of Antipolo (PEPA)
Global Health	Public School Health Employees Association, NCR (PSHEA-NCR)
Initiatives for Dialogue and Empowerment through Alternative Legal Services (IDEALS)	Quezon City Local Government Unit and Health Department
iECHO Support Advocacy Inc.	Rajah Support Group
iSupport Bohol	REDiate (REDx)
Kaagbai Philippines	Red Seahorse Inc.
Kahugpungan sa mga Dagkong Paningkamot Gikan sa Surigao (KADAPIG) Surigao	Region Eight HIV and AIDS Advocacy Group Inc. (REHAG)
LakanBini Advocates Philippines	Regional Sub-Committee for the Welfare of Children (RSCWC)
Mindanao Action Core Advocates for HIV and AIDS in Zamboanga (MACAHAZ)	Rizal Provincial Health Office
Metro Manila Center for Health and Development (MMCHD)	Saint Louis University (SLU)
National Young Key Population Network (NYKP Network)	Saint Paul University Philippines (SPUP) - Tuguegarao City
Negros Island Region (NIR)	Special Assemblage for HIV/AIDS Advocates of Davao Inc. (SAHAD)
Network Plus Philippines	St. Luke’s Medical Center Foundation (SLMCF)
Northern Mindanao AIDS Advocates	Sustained Health Initiative in the Philippines (SHIP)
Bukidnon	TAHAS, INC. (The Advocates on HIV/AIDS Society)
Cagayan de Oro City	Takeda Healthcare Philippines, Inc
Iligan City	The Cagayan Valley Support System Inc. (CVSSI)
Northern Mindanao Center for Health Development – Region 10	The Libulan Project
Occidental Mindoro Provincial Health Office	The Love Yourself (TLY)
One Positive Prevention Advocacy (OPPA)	The Red Ribbon Foundation (TRR)
Oponganon Plus	UNAIDS (Joint United Nations Programme on HIV/AIDS)
Pampanga Provincial Health Office (PPHO)	United Nations Population Fund (UNFPA)
Pascual Consumer Healthcare Corp	United Nations Children’s Fund (UNICEF)
Pediatric Infectious Disease Society of the Philippines (PIDSP)	United Nations Office on Drugs and Crime (UNODC)
Philippine Anti-Discrimination Alliance of Youth Leaders (PANTAY)	United Western Visayas Inc.
Philippine Business for Social Progress (PBSP)	University of the Philippines Manila (UP Manila)
Philippine Information Agency (PIA)	University of the Philippines Visayas (UP Visayas)
Philippine National AIDS Council (PNAC)	United States Agency for International Development (USAID)
Philippine National Police (PNP)	VICTORS Association Incorporated
	West Visayas State University – College of Medicine (WVSU COM)
	West Visayas State University – College of Nursing (WVSU CON)
	World Health Organization (WHO)

EDUCATION

Asia Pacific Caregiving & Healthcare Training Center	Central Luzon State University
Batangas State University	C/E Events Management Services
Batangas State University – Science and Technology Education Program (STEP)	Colegio ng Lungsod ng Batangas
	Crossroads Technical Institute
Benito and Catalino Yap Foundation, Inc./St. Mutien Marie College	Davao Medical School Foundation
Benito and Catalino Yap Foundation, Inc./St. Mutien Marie College - Benito and Catalino Yap Foundation Integrated Academy (BIA)	De La Salle (DLS)-Santiago Zobel School, Inc.
Local Government Units (LGUs) of:	Department of Education – Schools Division Office of Batangas City
Barangay Bagong Pagasa, Quezon City	Eastern Visayas State University
Barangay Tambo, Paranaque	Experiential Communications Integrating Trade & Events
CAP Training and Assessment Center	(EXCITE) Inc.

DISASTER RESPONSE

Alpha Distinct Development Solutions Inc.	Benita and Catalino Yap Foundation
Association of Shell Dealers Inc.	Metrobank Foundation
Ayala Foundation	Philippine Disaster Resilience Foundation
Local Government Units (LGUs) of:	Radio Mindanao Network
Barangay Dos, Bacolod City	Saint Paul University Philippines – Tuguegarao City
Barangay Mansaya, Iloilo City	Sanford Marketing Inc. – Savemore
Barangays Pagkakaisa and Bagong Silang , Puerto Princesa City	
Barangay Puntod and Macabalan, Cagayan de Oro	



SyCip Gorres Velayo & Co.  
6760 Ayala Avenue  
1226 Makati City  
Philippines

Tel: (632) 8891 0307  
Fax: (632) 8819 0872  
sgv.ph

INDEPENDENT AUDITOR’S REPORT

The Board of Trustees  
Pilipinas Shell Foundation, Inc.  
41<sup>st</sup> Floor, The Finance Centre, 26<sup>th</sup> Street corner 9<sup>th</sup> Avenue,  
Bonifacio Global City, Brgy. Fort Bonifacio, Taguig City

Report on the Audit of the Financial Statements

Opinion

We have audited the financial statements of Pilipinas Shell Foundation, Inc. (the Foundation), which comprise the statements of assets, liabilities and foundation balances as at December 31, 2024 and 2023, and the statements of activities, statements of changes in foundation balances and statements of cash flows for the years then ended, and notes to the financial statements, including material accounting policy information.

In our opinion, the accompanying financial statements present fairly, in all material respects, the financial position of the Foundation as at December 31, 2024 and 2023, and its financial performance and its cash flows for the years then ended in accordance with Philippine Financial Reporting Standards (PFRS) Accounting Standards.

Basis for Opinion

We conducted our audits in accordance with Philippine Standards on Auditing (PSAs). Our responsibilities under those standards are further described in the *Auditor’s Responsibilities for the Audit of the Financial Statements* section of our report. We are independent of the Foundation in accordance with the Code of Ethics for Professional Accountants in the Philippines (Code of Ethics) together with the ethical requirements that are relevant to our audit of the financial statements in the Philippines, and we have fulfilled our other ethical responsibilities in accordance with these requirements and the Code of Ethics. We believe that the audit evidence we have obtained is sufficient and appropriate to provide a basis for our opinion.

Responsibilities of Management and Those Charged with Governance for the Financial Statements

Management is responsible for the preparation and fair presentation of the financial statements in accordance with PFRS Accounting Standards, and for such internal control as management determines is necessary to enable the preparation of financial statements that are free from material misstatement, whether due to fraud or error.

In preparing the financial statements, management is responsible for assessing the Foundation’s ability to continue as a going concern, disclosing, as applicable, matters related to going concern and using the going concern basis of accounting unless management either intends to liquidate the Foundation or to cease operations, or has no realistic alternative but to do so.

Those charged with governance are responsible for overseeing the Foundation’s financial reporting process.





### Auditor's Responsibilities for the Audit of the Financial Statements

Our objectives are to obtain reasonable assurance about whether the financial statements as a whole are free from material misstatement, whether due to fraud or error, and to issue an auditor's report that includes our opinion. Reasonable assurance is a high level of assurance but is not a guarantee that an audit conducted in accordance with PSAs will always detect a material misstatement when it exists. Misstatements can arise from fraud or error and are considered material if, individually or in the aggregate, they could reasonably be expected to influence the economic decisions of users taken on the basis of these financial statements.

As part of an audit in accordance with PSAs, we exercise professional judgment and maintain professional skepticism throughout the audit. We also:

- Identify and assess the risks of material misstatement of the financial statements, whether due to fraud or error, design and perform audit procedures responsive to those risks, and obtain audit evidence that is sufficient and appropriate to provide a basis for our opinion. The risk of not detecting a material misstatement resulting from fraud is higher than for one resulting from error, as fraud may involve collusion, forgery, intentional omissions, misrepresentations, or the override of internal control.
- Obtain an understanding of internal control relevant to the audit in order to design audit procedures that are appropriate in the circumstances, but not for the purpose of expressing an opinion on the effectiveness of the Foundation's internal control.
- Evaluate the appropriateness of accounting policies used and the reasonableness of accounting estimates and related disclosures made by management.
- Conclude on the appropriateness of management's use of the going concern basis of accounting and, based on the audit evidence obtained, whether a material uncertainty exists related to events or conditions that may cast significant doubt on the Foundation's ability to continue as a going concern. If we conclude that a material uncertainty exists, we are required to draw attention in our auditor's report to the related disclosures in the financial statements or, if such disclosures are inadequate, to modify our opinion. Our conclusions are based on the audit evidence obtained up to the date of our auditor's report. However, future events or conditions may cause the Foundation to cease to continue as a going concern.
- Evaluate the overall presentation, structure and content of the financial statements, including the disclosures, and whether the financial statements represent the underlying transactions and events in a manner that achieves fair presentation.

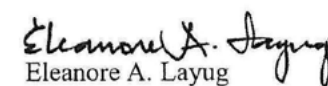
We communicate with those charged with governance regarding, among other matters, the planned scope and timing of the audit and significant audit findings, including any significant deficiencies in internal control that we identify during our audit.



### Report on the Supplementary Information Required Under Revenue Regulations No. 15-2010

Our audits were conducted for the purpose of forming an opinion on the basic financial statements taken as a whole. The supplementary information required under Revenue Regulations No. 15-2010 in Note 19 to the financial statements is presented for purposes of filing with the Bureau of Internal Revenue and is not a required part of the basic financial statements. Such information is the responsibility of the management of Pilipinas Shell Foundation, Inc. The information has been subjected to the auditing procedures applied in our audit of the basic financial statements. In our opinion, the information is fairly stated, in all material respects, in relation to the basic financial statements taken as a whole.

SYCIP GORRES VELAYO & CO.

  
Eleanore A. Layug  
Partner

CPA Certificate No. 0100794

Tax Identification No. 163-069-453

BOA/PRC Reg. No. 0001, April 16, 2024, valid until August 23, 2026

BIR Accreditation No. 08-001998-097-2023, September 12, 2023, valid until September 11, 2026

PTR No. 10465317, January 2, 2025, Makati City

April 23, 2025





**Pilipinas Shell  
Foundation»»**



The Finance Centre  
26th Street Corner 9th Avenue  
Bonifacio Global City  
Taguig 1635 PHL



+632 7500 2195



<http://pilipinasshellfoundation.org>



Pilipinas Shell Foundation, Inc. (PSFI)



Pilipinas Shell Foundation Inc.



@pilipinasshellfoundation

Editorial and Design:

**Drink Sustainability Communications**

[www.drinkph.com](http://www.drinkph.com)